

DATA SHEET

BTX Cooling System

Entry Version

D4000-C100 / D2000-C100

Issue June 2009
Product BTX Cooling D4000

Pages 1

BTX entry cooling system consisting of a full aluminium heatsink and a BTX airduct with integrated fan

Heatsink D4000-C100

Full aluminum
BTX compliant
Spring-loaded mounting screws for specified downforce
Universal for AMD (AM2) and Intel (LGA775)
Prepared for BTX supporter (prevents mainboard from deflection due to BTX heatsink pressure)

Airduct / Fan D2000-C100

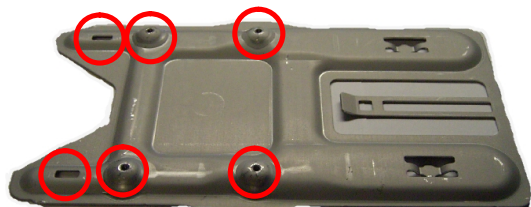
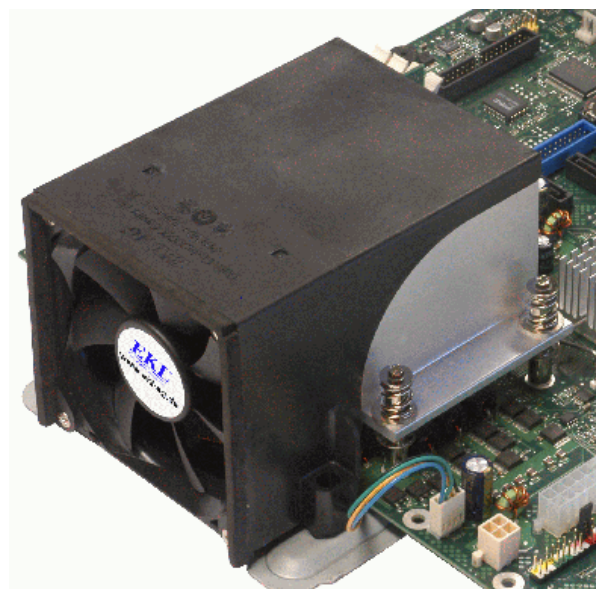
Plastic airduct, BTX compliant
Fan 92 x 25mm, ball/sleeve bearing, 4 pin PWM
Speed: 700rpm (+/- 300rpm) - 3.600rpm (+/- 10%)
Airflow: 0.39 m³/min – 2.0 m³/min
Sound level: 18 dB(A) - 44dB(A) max.
MTBF: ~ 40.000hrs

Supported processors

AMD Sempron
AMD Athlon, Phenom (up to 89W)
AMD Opteron 1000 series (up to 103W)
Intel Celeron processors (up to 95W max.)
Intel Dual Core / Quad Core processors (up to 95W max.)

Mechanical requirements

BTX chassis / SRM (Support Retention Module) must provide 4 + 2 mounting screw threads (UNC 6-32)



BTX Cooling System offered by Fujitsu
Technology Solutions in cooperation with EKL AG

EKL[®]
innovative solutions

Information about environmental care, policies, programs and our Environmental Guideline FSC 03230:

[ts.fujitsu.com /aboutus](http://ts.fujitsu.com/aboutus)

Take back and Recycling information: [ts.fujitsu.com /recycling](http://ts.fujitsu.com/recycling)

All rights reserved, including intellectual property rights. Technical data subject to modifications and delivery subject to availability. Any liability that the data and illustrations are complete, actual or correct is excluded. Designations may be trademarks and/or copyrights of the respective manufacturer, the use of which by third parties for their own purposes may infringe the rights of such owner. For further information see: ts.fujitsu.com/terms_of_use.html
Copyright © Fujitsu Technology Solutions GmbH 2009

Published by:
Fujitsu Technology Solutions GmbH
de.ts.fujitsu.com