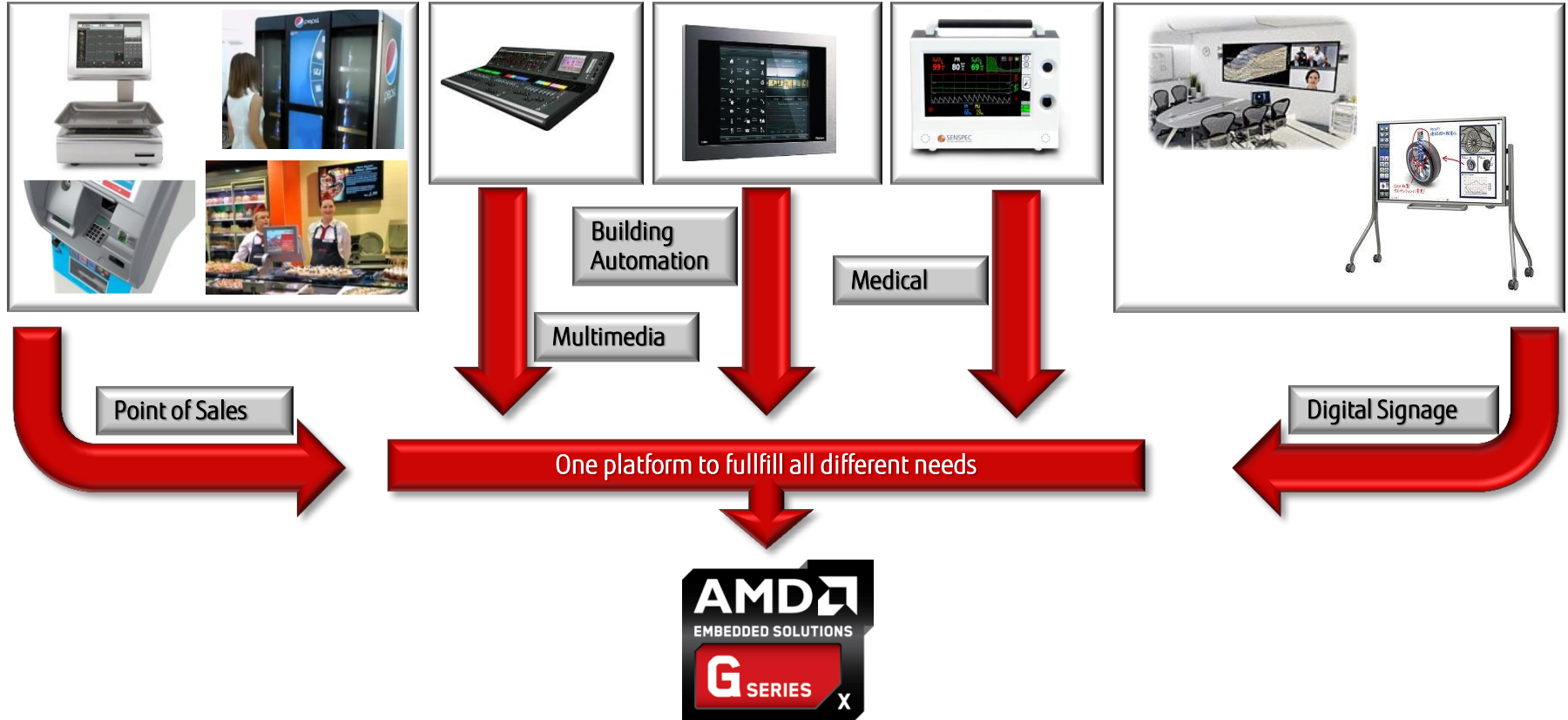


# Industrial Mainboards – based on AMD<sup>®</sup> platforms



# The best choice for different market places



# Industrial Series – AMD based platforms



Industrial Series AMD Processors		2014				2015				2016				2017				2018			
Name	Chipset	Q1	Q2	Q3	Q4	Q1	Q2	Q3	Q4	Q1	Q2	Q3	Q4	Q1	Q2	Q3	Q4	Q1	Q2	Q3	Q4
D3313-S1	AMD G-Series SoC	PL	ECN <sup>2)</sup>			ECN <sup>3)</sup>											LAO	EOL	XLC		
D3313-S2	AMD G-Series SoC	PL	ECN <sup>2)</sup>			ECN <sup>3)</sup>											LAO	EOL	XLC		
D3313-S3	AMD G-Series SoC	PL	ECN <sup>2)</sup>			ECN <sup>3)</sup>											LAO	EOL	XLC		
D3313-S4	AMD G-Series SoC						SA	PL <sup>1)</sup>													
D3313-S5	AMD G-Series SoC						SA	PL <sup>1)</sup>													
D3313-S6	AMD G-Series SoC							SA	PL <sup>1)</sup>												
D3003-S3 <sup>2)</sup>	AMD embedded G-Series DVI + LVDS							LAO EOL	XLC				XLC-EOL								
D3003-S1 <sup>3)</sup>	AMD embedded G-Series DVI + LVDS							LAO EOL	XLC				XLC-EOL								
D3003-S2 <sup>2)</sup>	AMD embedded G-Series DVI + DP							LAO EOL	XLC				XLC-EOL								

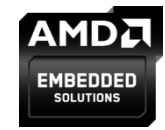
Update

New

- 1) New APU versions "SteppeEagle" (-S4: AMD GX-222 DualCore 2.2GHz / 15W -S5: AMD GX-412 QuadCore 1.2GHz / 7W) Launch expected in 07/2015
- 2) PCB update and stuffing change from 4/2014 (see ECN overview for details)
- 3) Stuffing update for improved LVDS backlight handling from Q1/2015 (see ECN overview for details)
- 4) Processor AMD embedded G-Series Dual-Core 1,65 GHz / 18W (T156N)
- 5) Processor AMD embedded G-Series Single-Core 1,2 GHz / 9W (T144R)

SA	Samples are available about 4 weeks ahead of launch date
PL?	Product Launch: Date is not yet confirmed
PL	Product Launch: Date is confirmed
ECN	Engineering Change Notification
	Mainboard/Component in production

LAO	After Last Assured Order date, orders can only be accepted based upon availability Orders placed on LAO date are binding. Delivery is possible up to 8 weeks after LAO
EOL	The product has End Of Life and can no longer be ordered. The date listed is the last month of availability
XLC	eXtended LifeCycle: Product is still available after regular EOL (min. order quantity required)
EOXLC	End of eXtended LifeCycle

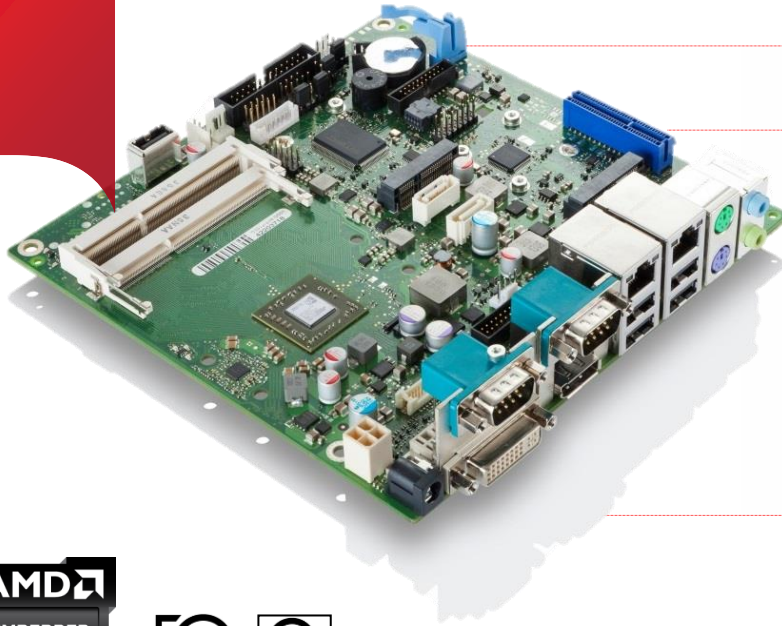


# Industrial Mainboard D3313-S



New  
Mainboard  
Models!

D3313-S4  
D3313-S5  
D3313-S6



## Highlights



- Mini-ITX for Industrial Applications
- AMD embedded G-Series SoC „eKabini“ & “Steppe Eagle”
- 24/7 support & extended temperature range
- 16GB DDR3 1600 SDRAM
- Integrated graphics (DX11)  
DVI, DP, LVDS



# Industrial Mainboard D3313-S



FUJITSU

## :: Features ::

- Mini-ITX for Industrial Applications, up to 60°C
- Processor AMD embedded G-Series SoC „eKabini“ / „Steppe Eagle“
  - D3313-S1 AMD Embedded **GX-210HA** SOC with AMD Radeon™ HD 8210E Graphics (1.0GHz/9W) DualCore
  - D3313-S2 AMD Embedded **GX-217GA** SOC with AMD Radeon™ HD 8280E Graphics (1.65GHz/15W) DualCore
  - D3313-S3 AMD Embedded **GX-420CA** SOC with AMD Radeon™ HD 8400E Graphics (2.00GHz/25W) QuadCore
  - » - D3313-S4 AMD Embedded **GX-222** SOC with AMD Radeon™ R5E Graphics (2.22 GHz/15W) Dualcore
  - » - D3313-S5 AMD Embedded **GX-412HC** SOC with AMD Radeon™ R3E Graphics (1.20 GHz/7W) Quadcore
  - » - D3313-S6 AMD Embedded **GX-424GC SOC** with AMD Radeon R5E Graphics (2.40 GHz/25W) Quadcore
- Fanless operation possible!
- DDR3 1600 SDRAM, 2 x SO socket, max. 16GB
- Integrated graphics (DX11) DVI, DP, LVDS
- 1 x PCIe x16(4 Lanes) , 8 x USB 2.0, 2x USB 3.0  
1 x internal socket for USB stick, 2 x SATA 600  
1 x mSATA connector, 1x miniPCIe (HS/FS) incl. USB  
8 Bit GPIO port, 1x Parallel
- Dual LAN 10/100/1000Mbit , High Definition Audio, Infineon TPM V1.2 (optional)
- Power supply: 12/19-24V DC (via internal connector or external AC adapter)

32 & 64 Bit Driver packages available  
Windows 7 & 8.1,  
Compact Eva-Driver  
Linux



Silent Fan



System Guard



Desk Update



HDD Password



Recovery BIOS



Watch Dog



Multi Boot



Fanless



Silent Drives



24/7 Operation



Extended Lifecycle

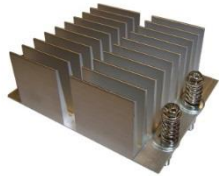
# D3313-S – Kit Solution

Cooling Solution	Supported Mainboard	Additional Accessories
Heatsink (passive Cooler)	<ul style="list-style-type: none"> <li>D3313-S1/-S5</li> </ul>	<ul style="list-style-type: none"> <li>Mini-ITX chassis</li> <li>PCI Riser Card</li> <li>Gbit LAN module</li> <li>Optional TPM</li> </ul>
Heatpipe	<ul style="list-style-type: none"> <li>D3313-S w/o -S3 Version</li> </ul>	
Active Cooler	<ul style="list-style-type: none"> <li>D3313-S all Versions</li> </ul>	



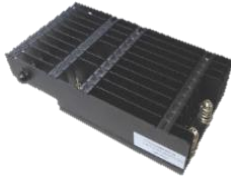
Mini-ITX Chassis

## Cooling Solution



Passive Cooler  

- D3313-S1
- D3313-S5



Passive Heatpipe  

- D3313-S1/-S2
- D3313-S4/-S5



Active Cooler  

- D3313-S2/S4
- D3313-S3/S6

## Additional Accessories



PCIe Riser card (D3318-A)  

- D3313-S



Gbit LAN D2907-A  

- D3313-S



Optional TPM

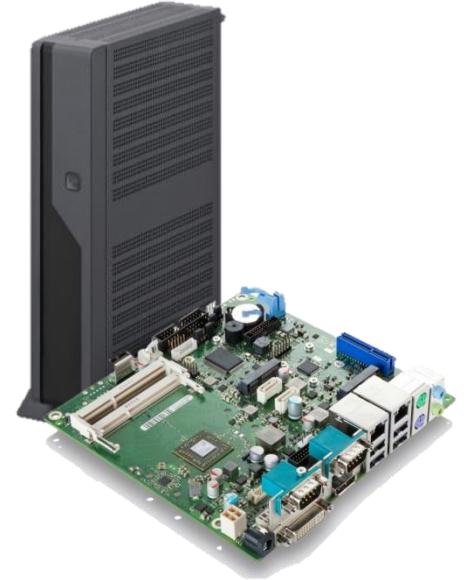
# Fujitsu DS 3313

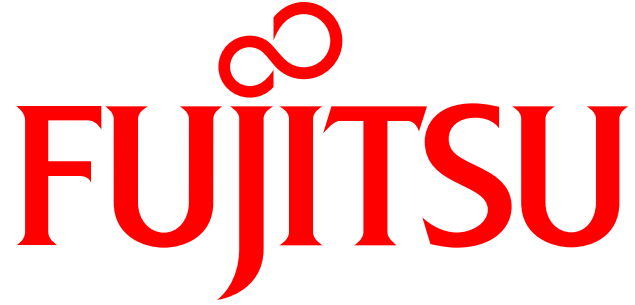


“The new Fujitsu DS 3313 is exactly what DS providers have been waiting for: Brilliant graphics and low power consumption by AMD, rock solid industrial platform, out-of-band remote manageability and a very attractive price level.”

Peter Hoser, Director OEM Sales, Fujitsu Technology Solutions

- The combination of Windows Embedded and the embedded G-Series SoC offers an reliable industrial grade solution with embedded lifespan and features
- Windows Embedded installed on a m-SATA module means a slim and rock solid solution for digital signage
- The included industrial grade mainboard D3313-S guarantees highest reliability, longevity, strict revision control and out-of-band manageability via DASH – made in Germany





shaping tomorrow with you